

Schedule of Easements & Restrictions	
No	Description
(G)	EASEMENT FOR SERVICES 9.6 WIDE AND VARIABLE (DP1262720)
(H)	EASEMENT TO DRAIN WATER 13.62 WIDE (DP1262720)
(F)	RIGHT OF CARRIAGEWAY 7.6 WIDE AND VARIABLE (DP1262720)
(A)	RIGHT OF ACCESS 1.5 WIDE (DP1262720)
(B)	EASEMENT FOR SUPPORT AND STRUCTURES 1.5 WIDE (DP1262720)
(N)	EASEMENT FOR SERVICES 2 WIDE (DP1262720)
(C)	RIGHT OF ACCESS 1.5 WIDE (DP1275480)
(K)	EASEMENT FOR UNDERGROUND CABLES 1 WIDE (DP1275480)
(J)	RIGHT OF ACCESS 7.6 WIDE (DP1275480)
(T)	EASEMENT FOR SERVICES 9.6 WIDE (DP1275480)
(Q)	EASEMENT TO DRAIN WATER 13.62 WIDE (DP1275480)
(Z)	RIGHT OF ACCESS 1.5 WIDE (DP1283822)
(I)	EASEMENT TO DRAIN WATER 3.5 WIDE (DP1262720)
(P)	EASEMENT FOR SUPPORT 0.5 WIDE (DP1272530)
(M)	RIGHT OF CARRIAGEWAY 3.5 WIDE (DP1262720)

SEE SHEET 5 FOR CONTINUATION

(P)

84.42

DP1272530

1.8m HIGH CHAINWIRE FENCING

2
DP1262720
4.157 ha (Deed)

GRASSED VACANT LOT

SEE SHEET 3 FOR CONTINUATION

GENERAL NOTES

ONLY TREES GREATER THAN 3 METRES IN HEIGHT ARE SHOWN ON THIS PLAN AND THEIR POSITIONS ARE DIAGRAMMATIC ONLY AND MAY REQUIRE ADDITIONAL SURVEY WHERE CRITICAL TO DESIGN.

CONTOURS ARE INDICATIVE AT GROUND FORM ONLY. SPOT LEVELS ONLY SHOULD BE USED FOR CALCULATIONS OF QUANTITIES WITH CAUTION.

LEVELS ARE ON AUSTRALIAN HEIGHT DATUM (AHD).

ALL SETOUT LEVELS MUST BE REFERRED TO THE BENCH MARK SHOWN ON THIS PLAN.

BOUNDARY NOTES

A BASIC BOUNDARY SURVEY HAS BEEN DONE SUITABLE FOR DA LODGEMENT PURPOSES.

BOUNDARIES HAVE NOT BEEN MARKED.

SURVEY INFORMATION NOTES

THE ORIGIN OF COORDINATES COMES FROM SSM167763 E294067.250 N623274.997 CLASS D (MGA2020) ADOPTED FROM SCIMS DATED 07/11/2023.

THE ORIGIN OF LEVELS COMES FROM GNSS AND IS BASED ON CORSNET DATA PROVIDED BY LRS NSW.

THE ORIENTATION OF THIS PLAN IS MGA NORTH WHICH HAS BEEN DETERMINED BY A COORDINATE JOIN BETWEEN SSM167763 AND SSM168904.

CERTIFICATE OF TITLE NOTES

THE FOLLOWING INFORMATION RELATES TO THE RESPECTIVE CERTIFICATE OF TITLE OF EACH LOT:

- LOT 2 IN DP1262720
(CT EDITION 6 DATED 15/07/2022 SEARCH DATE 26/10/2023)
- AFFECTED BY:
- RESTRICTION ON THE USE OF LAND (DP1154772)
 - POSITIVE COVENANT REFERRED TO AND NUMBERED (7) IN THE 888 INSTRUMENT (DP1203105)
 - POSITIVE COVENANT REFERRED TO AND NUMBERED (8) IN THE 888 INSTRUMENT (DP1203105)
 - POSITIVE COVENANT (DP1203107)
 - RESTRICTION ON THE USE OF LAND (DP1203107)
 - RIGHT OF CARRIAGEWAY 7.6 METRE(S) WIDE AND VARIABLE WIDTH (DP1262720)
 - EASEMENT FOR SERVICES 9.6 METRE(S) WIDE AND VARIABLE WIDTH (DP1262720)
 - RIGHT OF CARRIAGEWAY 3.5 METRE(S) WIDE (DP1262720)
 - POSITIVE COVENANT REFERRED TO AND NUMBERED (9) IN THE 888 INSTRUMENT (DP1262720)
 - POSITIVE COVENANT REFERRED TO AND NUMBERED (10) IN THE 888 INSTRUMENT (DP1262720)
 - RESTRICTION(S) ON THE USE OF LAND REFERRED TO AND NUMBERED (19) IN THE 888 INSTRUMENT (DP1262720)
 - RESTRICTION(S) ON THE USE OF LAND REFERRED TO AND NUMBERED (20) IN THE 888 INSTRUMENT (DP1262720)
 - RESTRICTION(S) ON THE USE OF LAND REFERRED TO AND NUMBERED (21) IN THE 888 INSTRUMENT (DP1262720)
 - RESTRICTION(S) ON THE USE OF LAND REFERRED TO AND NUMBERED (22) IN THE 888 INSTRUMENT (DP1262720)
 - RESTRICTION(S) ON THE USE OF LAND REFERRED TO AND NUMBERED (23) IN THE 888 INSTRUMENT (DP1262720)
- BENEFITED BY:
- EASEMENT FOR BATTER 10 METRE(S) WIDE AND VARIABLE WIDTH (DP1189248)
 - EASEMENT TO DRAIN WATER AND OVERLAND FLOW 10 METRE(S) WIDE AND VARIABLE WIDTH (DP1183248)
 - EASEMENT TO DRAIN WATER AND OVERLAND FLOW PATH 20 METRE(S) WIDE (DP1240841)
 - RIGHT OF ACCESS 1.5 METRE(S) WIDE (DP1262720)
 - EASEMENT FOR SUPPORT AND STRUCTURES 1.5 METRE(S) WIDE (DP1262720)
 - RIGHT OF CARRIAGEWAY 7.6 METRE(S) WIDE AND VARIABLE WIDTH (DP1262720)
 - EASEMENT FOR SERVICES 9.6 METRE(S) WIDE AND VARIABLE WIDTH (DP1262720)
 - EASEMENT FOR SERVICES 13.62 METRE(S) WIDE (DP1262720)
 - RIGHT OF CARRIAGEWAY 3.5 METRE(S) WIDE (DP1262720)
 - EASEMENT TO DRAIN WATER 3.5 METRE(S) WIDE (DP1262720)
 - EASEMENT TO DRAIN WATER VARIABLE WIDTH (DP1262720)
 - EASEMENT FOR SUPPORT 0.5 METRE(S) WIDE (DP1272530)

COVENANTS AND RESTRICTIONS NOTED ON THE TITLE HAVE NOT BEEN INVESTIGATED. THESE SHOULD BE INVESTIGATED PRIOR TO DESIGN TO ENSURE ANY FUTURE DEVELOPMENT COMPLIES.

SERVICES NOTES

ONLY THOSE SERVICES VISIBLE AT THE TIME OF SURVEY HAVE BEEN LOCATED AND ARE QUALITY LEVEL A AS DEFINED BY AS 5488.1:2019.

UNDERGROUND SERVICES HAVE BEEN PLOTTED FROM 'DIAL-BEFORE-YOU-DIG' PLANS, ARE QUALITY LEVEL D AS DEFINED BY AS 5488.1:2019 AND ARE ONLY CURRENT AT THE DATE OF SURVEY.

ALL RELEVANT AUTHORITIES MUST BE CONTACTED TO DETERMINE THE FULL EXTENT OF SERVICES PRIOR TO ANY PLANNING OR WORKS NEAR THE SITE.

© COPYRIGHT

THIS PLAN IS NOT TO BE USED FOR ANY PURPOSE OTHER THAN ITS ORIGINAL INTENTION AND REMAINS THE PROPERTY OF SDG. THIS PLAN CANNOT BE REPRODUCED, COPIED OR DIGITALLY TRANSFERRED (IN WHOLE OR PART) WITHOUT PRIOR WRITTEN PERMISSION OF SDG.

PROJECT:

DETAIL AND LEVEL SURVEY OF
LOT 2 IN DP1262720

9 GREGORY HILLS DRIVE
GLEDSDOOD HILLS

CLIENT: SCHOOL INFRASTRUCTURE NSW

FILE: 9065 - Detail & Level - Rev A -

9 Gregory Hills Drive Gledswood Hills

LGA: CAMDEN

REF: 9065

ISSUE: A

SURVEY DATE: 10/11/2023

SCALE: 1:250

CONTOURS: 0.5m

DATUM: AHD

AZIMUTH: MGA2020

SHEET 2 OF 9 SHEETS

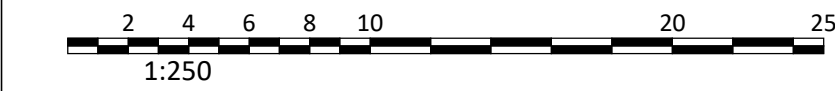


SDG Pty Ltd
abn 85 213 523 621
Suite 1, 3 Railway Street, Baulkham Hills NSW 2153
t: (02) 9630 7955 w: sdg.net.au
Liability limited by a scheme approved under Professional Standards Legislation

CRAIG TURNER ID: SU000248
REGISTERED LAND SURVEYOR




ISSUE	DATE	AMENDMENT	SURV	CHK
A	10/11/23	ORIGINAL ISSUE	PQ	JB



ISSUE	DATE	AMENDMENT	SURV	CHK
A	10/11/23	ORIGINAL ISSUE	PQ	JB



CRAIG TURNER ID: SU000248
REGISTERED LAND SURVEYOR

GENERAL NOTES	
ONLY TREES GREATER THAN 3 METRES IN HEIGHT ARE SHOWN ON THIS PLAN AND THEIR POSITIONS ARE DIAGRAMMATIC ONLY AND MAY REQUIRE ADDITIONAL SURVEY WHERE CRITICAL TO DESIGN.	
CONTOURS ARE INDICATIVE AT GROUND FLOW ONLY. SPOT LEVELS ONLY SHOULD BE USED FOR CALCULATIONS OF QUANTITIES WITH CAUTION.	
LEVELS ARE ON AUSTRALIAN HEIGHT DATUM (AHD).	
ALL SETOUT LEVELS MUST BE REFERRED TO THE BENCH MARK SHOWN ON THIS PLAN.	
BOUNDARY NOTES	
A BASIC BOUNDARY SURVEY HAS BEEN DONE SUITABLE FOR DA LODGEMENT PURPOSES.	
BOUNDARIES HAVE NOT BEEN MARKED.	
SURVEY INFORMATION NOTES	
THE ORIGIN OF COORDINATES COMES FROM SSM167763 E294067.250 N6233274.997 CLASS D (MGA2020) ADOPTED FROM SCIMS DATED 07/11/2023.	
THE ORIGIN OF LEVELS COMES FROM GNSS AND IS BASED ON CORNSNET DATA PROVIDED BY LRS NSW.	
THE ORIENTATION OF THIS PLAN IS MGA NORTH WHICH HAS BEEN DETERMINED BY A COORDINATE JOIN BETWEEN SSM167763 AND SSM168904.	
CERTIFICATE OF TITLE NOTES	
THE FOLLOWING INFORMATION RELATES TO THE RESPECTIVE CERTIFICATE OF TITLE OF EACH LOT:	
- LOT 2 IN DP1262720 (CT SECTION 6 DATED 15/07/2022 SEARCH DATE 26/10/2023) - EFFECTED BY: - RESTRICTION ON THE USE OF LAND (DP1154772) - POSITIVE COVENANT REFERRED TO AND NUMBERED (7) IN THE 888 INSTRUMENT (DP1203105) - POSITIVE COVENANT REFERRED TO AND NUMBERED (8) IN THE 888 INSTRUMENT (DP1203105) - POSITIVE COVENANT (DP1203107) - RESTRICTION ON THE USE OF LAND (DP1203107) - RIGHT OF CARRIAGEWAY 7.6 METRE(S) WIDE AND VARIABLE WIDTH (DP1262720) - EASEMENT FOR SERVICES 9.6 METRE(S) WIDE AND VARIABLE WIDTH (DP1262720) - RIGHT OF CARRIAGEWAY 3.5 METRE(S) WIDE (DP1262720) - POSITIVE COVENANT REFERRED TO AND NUMBERED (9) IN THE 888 INSTRUMENT (DP1262720) - POSITIVE COVENANT REFERRED TO AND NUMBERED (10) IN THE 888 INSTRUMENT (DP1262720) - RESTRICTIONS(ON) THE USE OF LAND REFERRED TO AND NUMBERED (19) IN THE 888 INSTRUMENT (DP1262720) - RESTRICTIONS(ON) THE USE OF LAND REFERRED TO AND NUMBERED (20) IN THE 888 INSTRUMENT (DP1262720) - RESTRICTIONS(ON) THE USE OF LAND REFERRED TO AND NUMBERED (21) IN THE 888 INSTRUMENT (DP1262720) - RESTRICTIONS(ON) THE USE OF LAND REFERRED TO AND NUMBERED (22) IN THE 888 INSTRUMENT (DP1262720) - RESTRICTIONS(ON) THE USE OF LAND REFERRED TO AND NUMBERED (23) IN THE 888 INSTRUMENT (DP1262720) - BENEFITED BY: - EASEMENT FOR BATTER 10 METRE(S) WIDE AND VARIABLE WIDTH (DP1189248) - EASEMENT TO DRAIN WATER AND OVERLAND FLOW 10 METRE(S) WIDE AND VARIABLE WIDTH (DP1183248) - EASEMENT TO DRAIN WATER AND OVERLAND FLOW PATH 20 METRE(S) WIDE (DP1240841) - RIGHT OF ACCESS 1.5 METRE(S) WIDE (DP1262720) - EASEMENT FOR SUPPORT AND STRUCTURES 1.5 METRE(S) WIDE (DP1262720) - RIGHT OF CARRIAGEWAY 7.6 METRE(S) WIDE AND VARIABLE WIDTH (DP1262720) - EASEMENT FOR SERVICES 9.6 METRE(S) WIDE AND VARIABLE WIDTH (DP1262720) - EASEMENT FOR SERVICES 13.62 METRE(S) WIDE (DP1262720) - RIGHT OF CARRIAGEWAY 3.5 METRE(S) WIDE (DP1262720) - EASEMENT TO DRAIN WATER 3.5 METRE(S) WIDE (DP1262720) - EASEMENT TO DRAIN WATER VARIABLE WIDTH (DP1262720) - EASEMENT FOR SUPPORT 0.5 METRE(S) WIDE (DP1272530)	
COVENANTS AND RESTRICTIONS NOTED ON THE TITLE HAVE NOT BEEN INVESTIGATED. THESE SHOULD BE INVESTIGATED PRIOR TO DESIGN TO ENSURE ANY FUTURE DEVELOPMENT COMPLIES.	
SERVICES NOTES	
ONLY THOSE SERVICES VISIBLE AT THE TIME OF SURVEY HAVE BEEN LOCATED AND ARE QUALITY LEVEL A AS DEFINED BY AS 5488.1:2019.	
UNDERGROUND SERVICES HAVE BEEN PLOTTED FROM 'DIAL-BEFORE-YOU-DIG' PLANS. ARE QUALITY LEVEL A AS DEFINED BY AS 5488.1:2019 AND ARE ONLY CURRENT AT THE DATE OF SEARCH.	
ALL RELEVANT AUTHORITIES MUST BE CONTACTED TO DETERMINE THE FULL EXTENT OF SERVICES PRIOR TO ANY PLANNING OR WORKS NEAR THE SITE.	
@ COPYRIGHT	
THIS PLAN IS NOT TO BE USED FOR ANY PURPOSE OTHER THAN ITS ORIGINAL INTENTION AND REMAINS THE PROPERTY OF SDG. THIS PLAN CANNOT BE REPRODUCED, COPIED OR DIGITALLY TRANSFERRED (IN WHOLE OR PART) WITHOUT PRIOR WRITTEN PERMISSION OF SDG.	
PROJECT:	
DETAIL AND LEVEL SURVEY OF LOT 2 IN DP1262720	
9 GREGORY HILLS DRIVE GLEDSWOOD HILLS	
CLIENT: SCHOOL INFRASTRUCTURE NSW	
FILE: 9065 - Detail & Level - Rev A - 9 Gregory Hills Drive Gledswood Hills	
LGA: CAMDEN	
REF: 9065	CONTOURS: 0.5m
ISSUE: A	DATUM: MGA
DATE: 10/11/2023	AZIMUTH: AH42020
SCALE: 1:250	SHEET 3 OF 9 SHEETS
 <p style="text-align: center;">SDG Pty Ltd abn 85 213 523 621 Suite 1, 3 Railway Street, Baulkham Hills NSW 2153 t: (02) 9630 7955 w: sdg.net.au Liability limited by a scheme approved under Professional Standards Legislation</p>	

GENERAL NOTES

ONLY TREES GREATER THAN 3 METRES IN HEIGHT ARE SHOWN ON THIS PLAN AND THEIR POSITIONS ARE DIAGRAMMATIC ONLY AND MAY REQUIRE ADDITIONAL SURVEY WHERE CRITICAL TO DESIGN.

CONTOURS ARE INDICATIVE AT GROUND FORM ONLY. SPOT LEVELS ONLY SHOULD BE USED FOR CALCULATIONS OF QUANTITIES WITH CAUTION.

LEVELS ARE ON AUSTRALIAN HEIGHT DATUM (AHD).

ALL SETOUT LEVELS MUST BE REFERRED TO THE BENCH MARK SHOWN ON THIS PLAN.

BOUNDARY NOTES

A BASIC BOUNDARY SURVEY HAS BEEN DONE SUITABLE FOR DA LODGEMENT PURPOSES.

BOUNDARIES HAVE NOT BEEN MARKED.

SURVEY INFORMATION NOTES

THE ORIGIN OF COORDINATES COMES FROM SSM167763 E294067.250 N623274.997 CLASS D (MGA2020) ADOPTED FROM SCIMS DATED 07/11/2023.

THE ORIGIN OF LEVELS COMES FROM GNSS AND IS BASED ON CORSNET DATA PROVIDED BY LRS NSW.

THE ORIENTATION OF THIS PLAN IS MGA NORTH WHICH HAS BEEN DETERMINED BY A COORDINATE JOIN BETWEEN SSM167763 AND SSM168904.

CERTIFICATE OF TITLE NOTES

THE FOLLOWING INFORMATION RELATES TO THE RESPECTIVE CERTIFICATE OF TITLE OF EACH LOT:

- LOT 2 IN DP1262720
(CT EDITION 6 DATED 15/07/2022 SEARCH DATE 26/10/2023)
- AFFECTED BY:
- RESTRICTION ON THE USE OF LAND (DP1154772)
- POSITIVE COVENANT REFERRED TO AND NUMBERED (7) IN THE 888 INSTRUMENT (DP1203105)
- POSITIVE COVENANT REFERRED TO AND NUMBERED (8) IN THE 888 INSTRUMENT (DP1203105)
- POSITIVE COVENANT (DP1203107)
- RESTRICTION ON THE USE OF LAND (DP1203107)
- RIGHT OF CARRIAGEWAY 7.5 METRE(S) WIDE AND VARIABLE WIDTH (DP1262720)
- EASEMENT FOR SERVICES 9.6 METRE(S) WIDE AND VARIABLE WIDTH (DP1262720)
- RIGHT OF CARRIAGEWAY 3.5 METRE(S) WIDE (DP1262720)
- POSITIVE COVENANT REFERRED TO AND NUMBERED (9) IN THE 888 INSTRUMENT (DP1262720)
- POSITIVE COVENANT REFERRED TO AND NUMBERED (10) IN THE 888 INSTRUMENT (DP1262720)
- RESTRICTION(S) ON THE USE OF LAND REFERRED TO AND NUMBERED (19) IN THE 888 INSTRUMENT (DP1262720)
- RESTRICTION(S) ON THE USE OF LAND REFERRED TO AND NUMBERED (20) IN THE 888 INSTRUMENT (DP1262720)
- RESTRICTION(S) ON THE USE OF LAND REFERRED TO AND NUMBERED (21) IN THE 888 INSTRUMENT (DP1262720)
- RESTRICTION(S) ON THE USE OF LAND REFERRED TO AND NUMBERED (22) IN THE 888 INSTRUMENT (DP1262720)
- RESTRICTION(S) ON THE USE OF LAND REFERRED TO AND NUMBERED (23) IN THE 888 INSTRUMENT (DP1262720)
- BENEFITED BY:
- EASEMENT FOR BATTER 10 METRE(S) WIDE AND VARIABLE WIDTH (DP1183248)
- EASEMENT TO DRAIN WATER AND OVERLAND FLOW 10 METRE(S) WIDE AND VARIABLE WIDTH (DP1183248)
- EASEMENT TO DRAIN WATER AND OVERLAND FLOW PATH 20 METRE(S) WIDE (DP1240841)
- RIGHT OF ACCESS 1.5 METRE(S) WIDE (DP1262720)
- EASEMENT FOR SUPPORT AND STRUCTURES 1.5 METRE(S) WIDE (DP1262720)
- RIGHT OF CARRIAGEWAY 7.6 METRE(S) WIDE AND VARIABLE WIDTH (DP1262720)
- EASEMENT FOR SERVICES 9.6 METRE(S) WIDE AND VARIABLE WIDTH (DP1262720)
- EASEMENT TO DRAIN WATER 3.5 METRE(S) WIDE (DP1262720)
- EASEMENT TO DRAIN WATER VARIABLE WIDTH (DP1262720)
- EASEMENT FOR SUPPORT 0.5 METRE(S) WIDE (DP1272530)

COVENANTS AND RESTRICTIONS NOTED ON THE TITLE HAVE NOT BEEN INVESTIGATED. THESE SHOULD BE INVESTIGATED PRIOR TO DESIGN TO ENSURE ANY FUTURE DEVELOPMENT COMPLIES.

SERVICES NOTES

ONLY THOSE SERVICES VISIBLE AT THE TIME OF SURVEY HAVE BEEN LOCATED AND AN QUALITY LEVEL A AS DEFINED BY AS 5488.1:2019.

UNDERGROUND SERVICES HAVE BEEN PLOTTED FROM 'DIAL-BEFORE-YOU-DIG' PLANS, ARE QUALITY LEVEL D AS DEFINED BY AS 5488.1:2019 AND ARE ONLY CURRENT AT THE DATE OF SEARCH.

ALL RELEVANT AUTHORITIES MUST BE CONTACTED TO DETERMINE THE FULL EXTENT OF SERVICES PRIOR TO ANY PLANNING OR WORKS NEAR THE SITE.

© COPYRIGHT

THIS PLAN IS NOT TO BE USED FOR ANY PURPOSE OTHER THAN ITS ORIGINAL INTENTION AND REMAINS THE PROPERTY OF SDG. THIS PLAN CANNOT BE REPRODUCED, COPIED OR DIGITALLY TRANSFERRED (IN WHOLE OR PART) WITHOUT PRIOR WRITTEN PERMISSION OF SDG.

PROJECT:

DETAIL AND LEVEL SURVEY OF LOT 2 IN DP1262720

9 GREGORY HILLS DRIVE GLEDSDOOD HILLS

CLIENT: SCHOOL INFRASTRUCTURE NSW

FILE: 9065 - Detail & Level - Rev A - 9 Gregory Hills Drive Gledswood Hills

LGA: CAMDEN

REF: 9065

ISSUE: A

SURVEY DATE: 10/11/2023

SCALE: 1:250

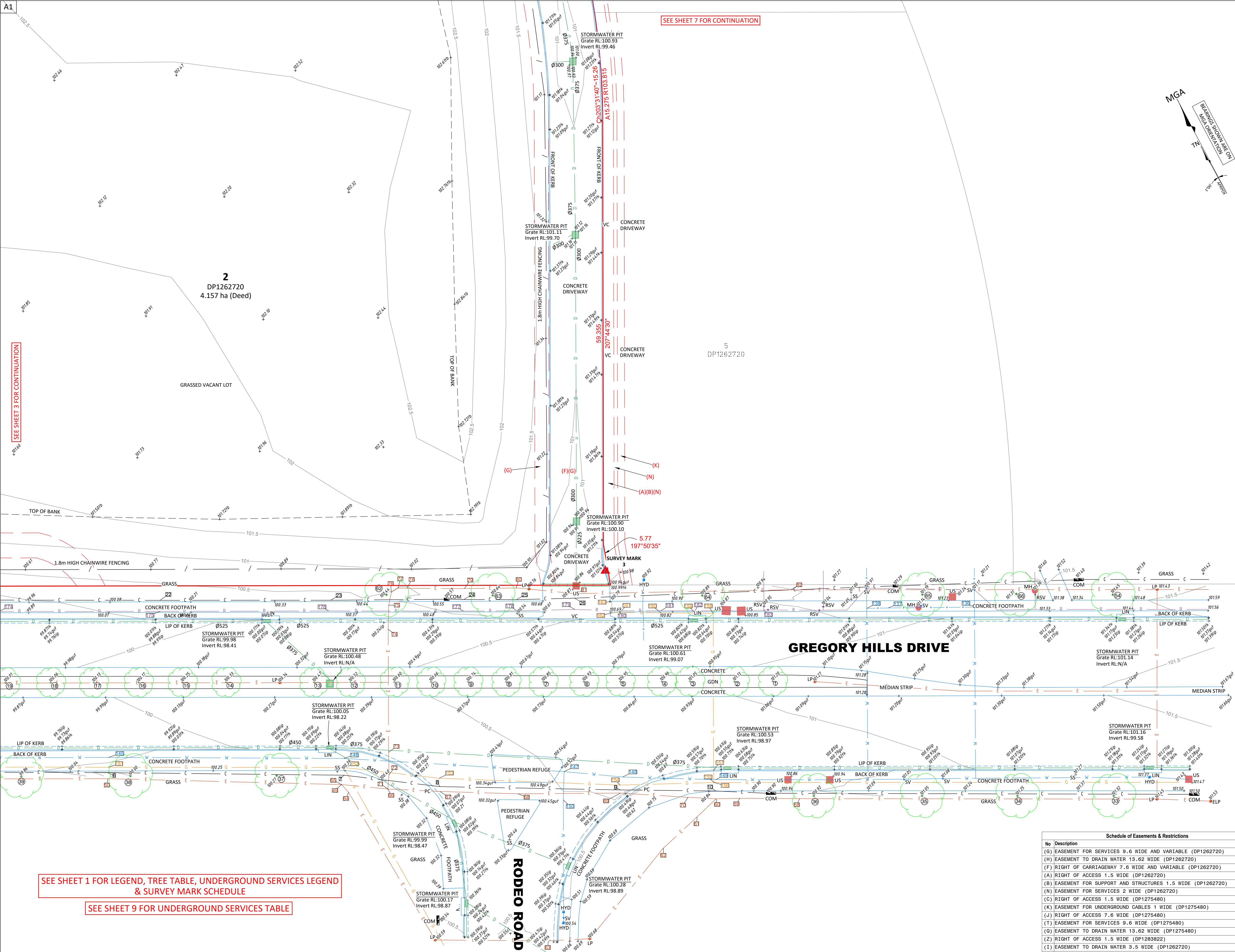
CONTOURS: 0.5m

DATUM: AHD

AZIMUTH: MGA2020

SHEET 4 OF 9 SHEETS

SDG Pty Ltd
abn 85 213 523 621
Suite 1, 3 Railway Street, Baulkham Hills NSW 2153
t: (02) 9630 7955 w: sdg.net.au
Liability limited by a scheme approved under Professional Standards Legislation

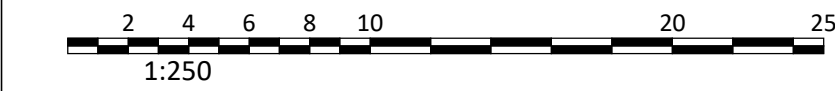


Schedule of Easements & Restrictions	
No	Description
(G)	EASEMENT FOR SERVICES 9.6 WIDE AND VARIABLE (DP1262720)
(H)	EASEMENT TO DRAIN WATER 13.62 WIDE (DP1262720)
(F)	RIGHT OF CARRIAGEWAY 7.6 WIDE AND VARIABLE (DP1262720)
(A)	RIGHT OF ACCESS 1.5 WIDE (DP1262720)
(B)	EASEMENT FOR SUPPORT AND STRUCTURES 1.5 WIDE (DP1262720)
(N)	EASEMENT FOR SERVICES 2 WIDE (DP1262720)
(G)	RIGHT OF ACCESS 1.5 WIDE (DP1275480)
(K)	EASEMENT FOR UNDERGROUND CABLES 1 WIDE (DP1275480)
(J)	RIGHT OF ACCESS 7.6 WIDE (DP1275480)
(T)	EASEMENT FOR SERVICES 9.6 WIDE (DP1275480)
(U)	EASEMENT TO DRAIN WATER 13.62 WIDE (DP1275480)
(Z)	RIGHT OF ACCESS 1.5 WIDE (DP1283822)
(I)	EASEMENT TO DRAIN WATER 3.5 WIDE (DP1262720)
(P)	EASEMENT FOR SUPPORT 0.5 WIDE (DP1272530)
(M)	RIGHT OF CARRIAGEWAY 3.5 WIDE (DP1262720)

ISSUE	DATE	AMENDMENT	SURV	CHK
A	10/11/23	ORIGINAL ISSUE	PQ	JB



CRAIG TURNER ID: SU000248
REGISTERED LAND SURVEYOR

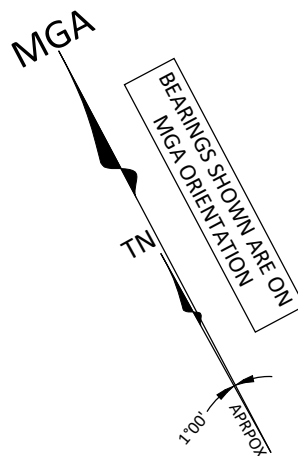


SEE SHEET 3 FOR CONTINUATION

SEE SHEET 7 FOR CONTINUATION

SEE SHEET 1 FOR LEGEND, TREE TABLE, UNDERGROUND SERVICES LEGEND & SURVEY MARK SCHEDULE

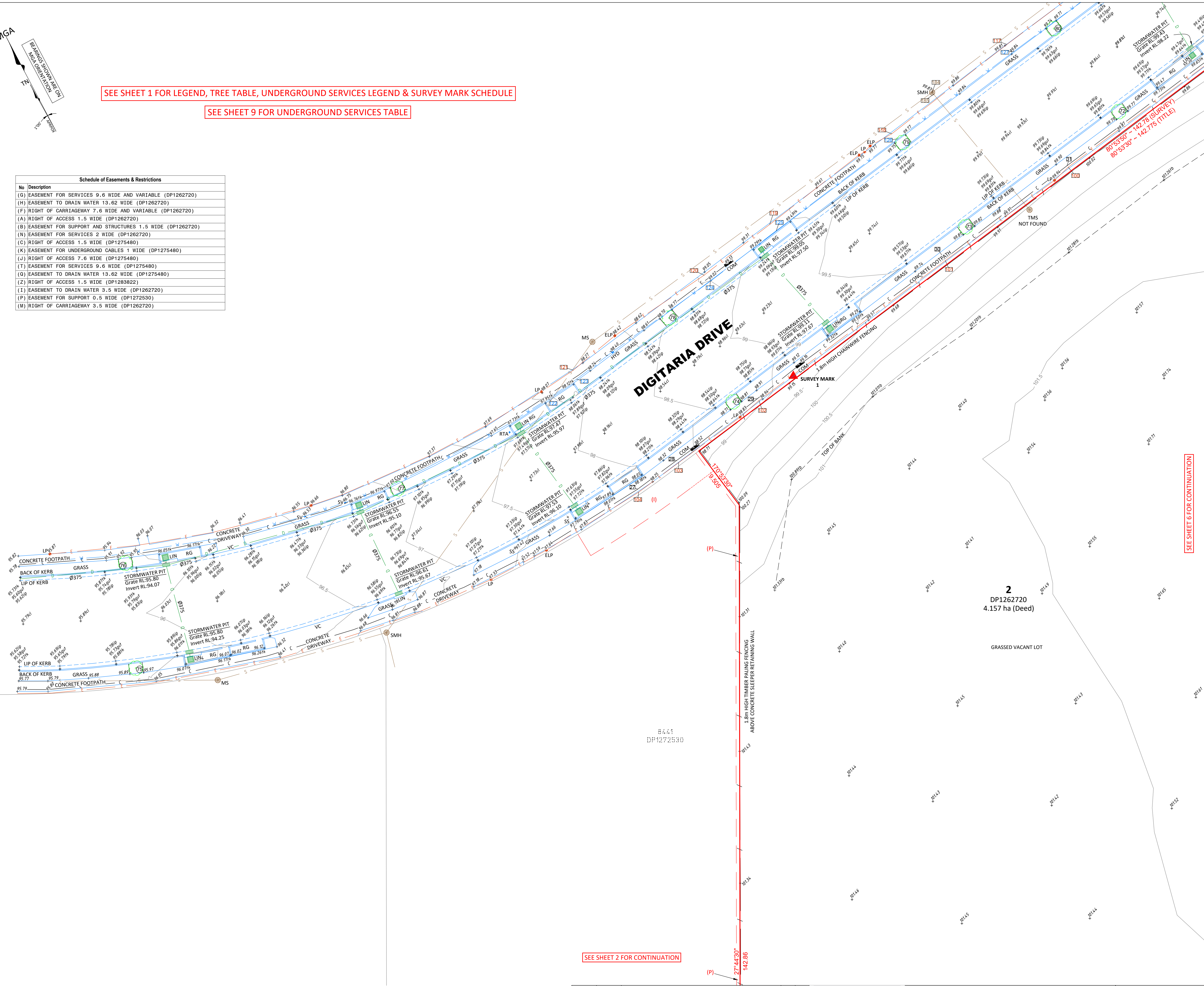
SEE SHEET 9 FOR UNDERGROUND SERVICES TABLE

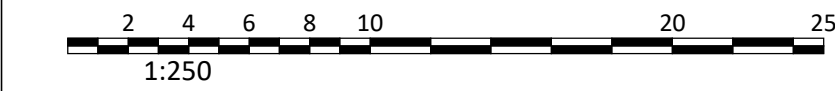


SEE SHEET 1 FOR LEGEND, TREE TABLE, UNDERGROUND SERVICES LEGEND & SURVEY MARK SCHEDULE

SEE SHEET 9 FOR UNDERGROUND SERVICES TABLE

Schedule of Easements & Restrictions	
No	Description
(G)	EASEMENT FOR SERVICES 9.6 WIDE AND VARIABLE (DP1262720)
(H)	EASEMENT TO DRAIN WATER 13.62 WIDE (DP1262720)
(F)	RIGHT OF CARRIAGEWAY 7.6 WIDE AND VARIABLE (DP1262720)
(A)	RIGHT OF ACCESS 1.5 WIDE (DP1262720)
(B)	EASEMENT FOR SUPPORT AND STRUCTURES 1.5 WIDE (DP1262720)
(N)	EASEMENT FOR SERVICES 2 WIDE (DP1262720)
(C)	RIGHT OF ACCESS 1.5 WIDE (DP1275480)
(K)	EASEMENT FOR UNDERGROUND CABLES 1 WIDE (DP1275480)
(J)	RIGHT OF ACCESS 7.6 WIDE (DP1275480)
(T)	EASEMENT FOR SERVICES 9.6 WIDE (DP1275480)
(Q)	EASEMENT TO DRAIN WATER 13.62 WIDE (DP1275480)
(Z)	RIGHT OF ACCESS 1.5 WIDE (DP1283822)
(I)	EASEMENT TO DRAIN WATER 3.5 WIDE (DP1262720)
(P)	EASEMENT FOR SUPPORT 0.5 WIDE (DP1272530)
(M)	RIGHT OF CARRIAGEWAY 3.5 WIDE (DP1262720)





**BEFORE
YOU DIG**
www.byda.com.au



SDG Pty Ltd
 abn 85 213 523 621
 Suite 1, 3 Railway Street, Baulkham Hills NSW 2153
 t: (02) 9630 7955 w: sdg.net.au
 Liability limited by a scheme approved
 under Professional Standards Legislation

ONLY TREES GREATER THAN 3 METRES IN HEIGHT ARE SHOWN ON THIS PLAN AND THEIR POSITIONS ARE DIAGRAMMATIC ONLY AND MAY REQUIRE ADDITIONAL SURVEY WHERE CRITICAL TO DESIGN.

CONTOURS ARE INDICATIVE AT GROUND FORM ONLY. SPOT LEVELS ONLY SHOULD BE USED FOR CALCULATIONS OF QUANTITIES WITH CAUTION.

LEVELS ARE ON AUSTRALIAN HEIGHT DATUM (AHD).

ALL SETOUT LEVELS MUST BE REFERRED TO THE BENCH MARK SHOWN ON THIS PLAN.

A BASIC BOUNDARY SURVEY HAS BEEN DONE SUITABLE FOR DA
LODGE MENT PURPOSES.

BOUNDARIES HAVE NOT BEEN MARKED.

THE ORIGIN OF COORDINATES COMES FROM SSM167763 E294067.250
N6233274.997 CLASS D (MGA2020) ADOPTED FROM SCIMS DATED
07/11/2023.

THE ORIGIN OF LEVELS COMES FROM GNSS AND IS BASED ON CORSNET DATA PROVIDED BY LRS NSW.

THE ORIENTATION OF THIS PLAN IS MGA NORTH WHICH HAS BEEN DETERMINED BY A COORDINATE JOIN BETWEEN SSM167763 AND SSM168904.

THE FOLLOWING INFORMATION RELATES TO THE RESPECTIVE
CERTIFICATE OF TITLE OF EACH LOTS:

LOT 1 IN DP1267220
 (CT EDITION 6 DATED 15/07/2022 SEARCH DATE 26/10/2023)
 - AFFECTED BY:
 - RESTRICTION ON THE USE OF LAND (DP1154772)
 - POSITIVE COVENANT REFERRED TO AND NUMBERED
 (7) IN THE 88B INSTRUMENT (DP1203105)
 - POSITIVE COVENANT REFERRED TO AND NUMBERED
 (8) IN THE 88B INSTRUMENT (DP1203105)
 - POSITIVE COVENANT REFERRED TO AND NUMBERED
 (9) IN THE 88B INSTRUMENT (DP1203107)
 - RESTRICTION ON THE USE OF LAND (DP1203107)
 - RIGHT OF CARRIAGEWAY 7.6 METRE(S) WIDE AND
 VARIABLE WIDTH (DP1267220)
 - EASEMENT FOR SERVICES 0.5 METRE(S) WIDE AND
 VARIABLE WIDTH (DP1267220)
 - RIGHT OF CARRIAGEWAY 3.5 METRE(S) WIDE (DP1267220)
 - POSITIVE COVENANT REFERRED TO AND NUMBERED
 (9) IN THE 88B INSTRUMENT (DP1267220)
 - POSITIVE COVENANT REFERRED TO AND NUMBERED
 (10) IN THE 88B INSTRUMENT (DP1267220)
 - RESTRICTIONS ON THE USE OF LAND REFERRED TO
 AND NUMBERED (13) IN THE 88B INSTRUMENT (DP1267220)
 - RESTRICTIONS ON THE USE OF LAND REFERRED TO
 AND NUMBERED (20) IN THE 88B INSTRUMENT (DP1267220)
 - RESTRICTIONS ON THE USE OF LAND REFERRED TO
 AND NUMBERED (21) IN THE 88B INSTRUMENT (DP1267220)
 - RESTRICTIONS ON THE USE OF LAND REFERRED TO
 AND NUMBERED (22) IN THE 88B INSTRUMENT (DP1267220)
 - RESTRICTIONS ON THE USE OF LAND REFERRED TO
 AND NUMBERED (23) IN THE 88B INSTRUMENT (DP1267220)
 - BENEFITED BY:
 - EASEMENT FOR BATTER 10 METRE(S) WIDE AND
 VARIABLE WIDTH (DP1189248)
 - EASEMENT TO DRAIN WATER AND OVERLAND FLOW
 10 METRE(S) WIDE AND VARIABLE WIDTH (DP1183248)
 - EASEMENT TO DRAIN WATER AND OVERLAND FLOW
 PATH 20 METRE(S) WIDE (DP1240841)
 - RIGHT OF ACCESS 1.5 METRE(S) WIDE (DP1267220)
 - EASEMENT FOR SUPPORT AND STRUCTURES 1.5
 METRE(S) WIDE (DP1267220)
 - RIGHT OF CARRIAGEWAY 7.6 METRE(S) WIDE AND
 VARIABLE WIDTH (DP1267220)
 - EASEMENT FOR SERVICES 9.6 METRE(S) WIDE AND
 VARIABLE WIDTH (DP1267220)
 - EASEMENT FOR SERVICES 13.6 METRE(S) WIDE
 (DP1267220)
 - RIGHT OF CARRIAGEWAY 3.5 METRE(S) WIDE (DP1267220)
 - EASEMENT TO DRAIN WATER 3.5 METRE(S) WIDE
 (DP1267220)
 - EASEMENT TO DRAIN WATER VARIABLE WIDTH
 (DP1267220)
 - EASEMENT FOR SUPPORT 0.5 METRE(S) WIDE (DP1277530)

COVENANTS AND RESTRICTIONS NOTED ON THE TITLE HAVE NOT BEEN INVESTIGATED. THESE SHOULD BE INVESTIGATED PRIOR TO DESIGN TO ENSURE ANY FUTURE DEVELOPMENT COMPLIES.

ONLY THOSE SERVICES VISIBLE AT THE TIME OF SURVEY HAVE BEEN LOCATED AND ARE QUALITY LEVEL A AS DEFINED BY AS 5488.1:2019.

UNDERGROUND SERVICES HAVE BEEN PLOTTED FROM 'DIAL-BEFORE-YOU-DIG' PLANS, ARE QUALITY LEVEL D AS DEFINED BY AS 5488.1:2019 AND ARE ONLY CURRENT AT THE DATE OF SEARCH.

ALL RELEVANT AUTHORITIES MUST BE CONTACTED TO DETERMINE THE FULL EXTENT OF SERVICES PRIOR TO ANY PLANNING OR WORKS NEAR THE SITE.

THIS PLAN IS NOT TO BE USED FOR ANY PURPOSE OTHER THAN ITS ORIGINAL INTENTION AND REMAINS THE PROPERTY OF SDG. THIS PLAN CANNOT BE REPRODUCED, COPIED OR DIGITALLY TRANSFERRED (IN WHOLE OR PART) WITHOUT PRIOR WRITTEN PERMISSION OF SDG.

PROJECT:
DETAIL AND LEVEL SURVEY OF
LOT 2 IN DP1262720

9 GREGORY HILLS DRIVE
GLEDSWOOD HILLS

CLIENT: SCHOOL INFRASTRUCTURE NSW

FILE: 9065 - Detail & Level - Rev A -

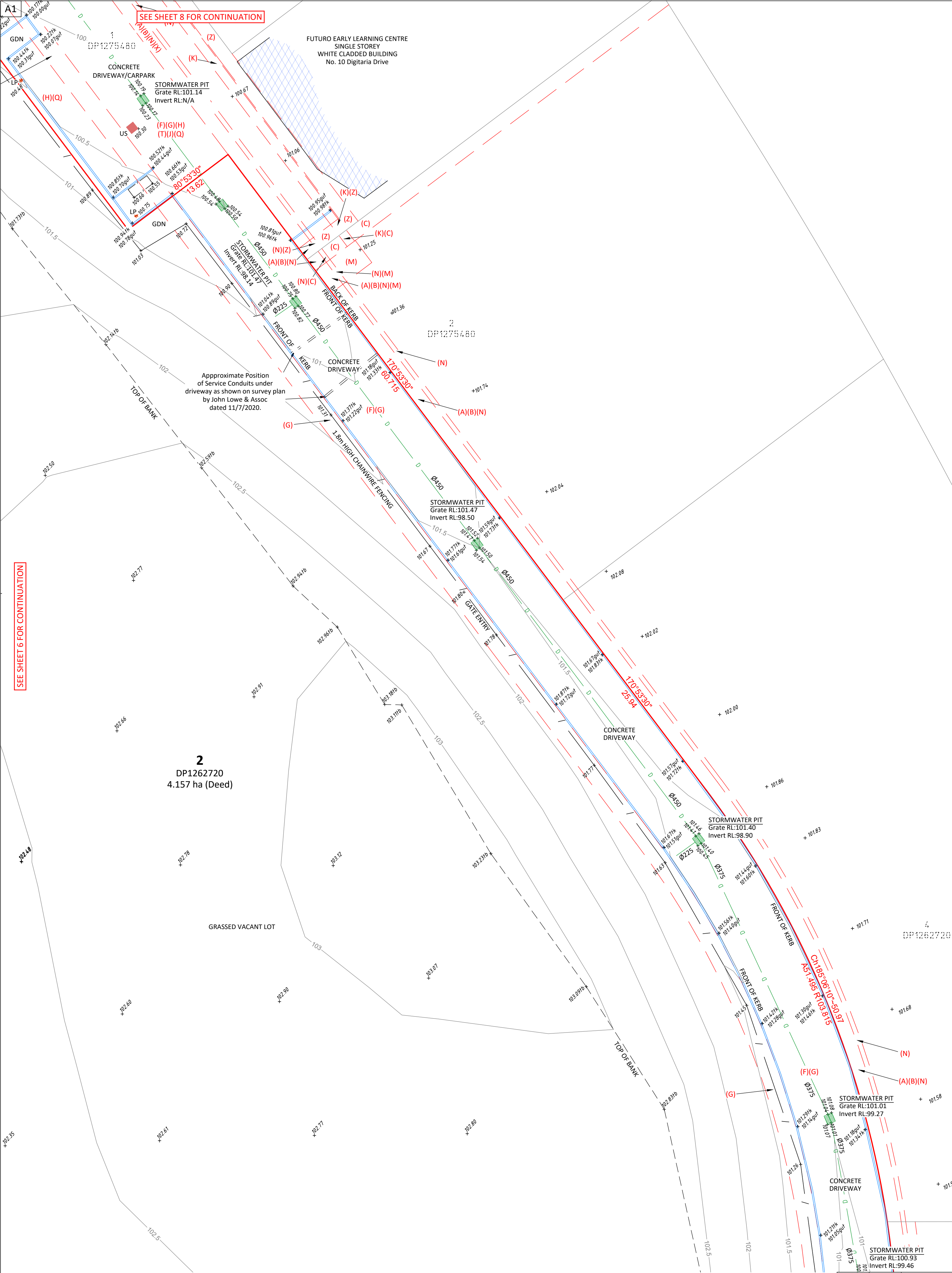
9 Gregory Hills Drive Gledswood Hills

LGA: CAMDEN

REF: 9065	CONTOURS: 0.5m
-----------	----------------

ISSUE: A

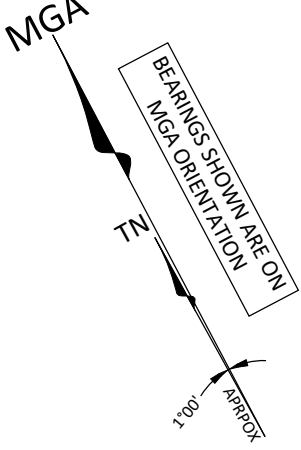
SURVEY DATE: 10/11/2023	AZIMUTH: MGA2020
SCALE: 1:250	SHEET 6 OF 9 SHEETS



SEE SHEET 1 FOR LEGEND, TREE TABLE, UNDERGROUND SERVICES LEGEND & SURVEY MARK SCHEDULE

SEE SHEET 9 FOR UNDERGROUND SERVICES TABLE

Schedule of Easements & Restrictions	
No	Description
(G)	EASEMENT FOR SERVICES 9.6 WIDE AND VARIABLE (DP1262720)
(H)	EASEMENT TO DRAIN WATER 13.62 WIDE (DP1262720)
(F)	RIGHT OF CARRIAGEWAY 7.6 WIDE AND VARIABLE (DP1262720)
(A)	RIGHT OF ACCESS 1.5 WIDE (DP1262720)
(B)	EASEMENT FOR SUPPORT AND STRUCTURES 1.5 WIDE (DP1262720)
(N)	EASEMENT FOR SERVICES 2 WIDE (DP1262720)
(C)	RIGHT OF ACCESS 1.5 WIDE (DP1275480)
(K)	EASEMENT FOR UNDERGROUND CABLES 1 WIDE (DP1275480)
(J)	RIGHT OF ACCESS 7.6 WIDE (DP1275480)
(T)	EASEMENT FOR SERVICES 9.6 WIDE (DP1275480)
(O)	EASEMENT TO DRAIN WATER 13.62 WIDE (DP1275480)
(Z)	RIGHT OF ACCESS 1.5 WIDE (DP1283822)
(L)	EASEMENT TO DRAIN WATER 3.5 WIDE (DP1262720)
(P)	EASEMENT FOR SUPPORT 0.5 WIDE (DP1272530)
(M)	RIGHT OF CARRIAGEWAY 3.5 WIDE (DP1262720)



GENERAL NOTES

ONLY TREES GREATER THAN 3 METRES IN HEIGHT ARE SHOWN ON THIS PLAN AND THEIR POSITIONS ARE DIAGRAMMATIC ONLY AND MAY REQUIRE ADDITIONAL SURVEY WHERE CRITICAL TO DESIGN.

CONTOURS ARE INDICATIVE AT GROUND FORM ONLY. SPOT LEVELS ONLY SHOULD BE USED FOR CALCULATIONS OF QUANTITIES WITH CAUTION.

LEVELS ARE ON AUSTRALIAN HEIGHT DATUM (AHD).

ALL SETOUT LEVELS MUST BE REFERRED TO THE BENCH MARK SHOWN ON THIS PLAN.

BOUNDARY NOTES

A BASIC BOUNDARY SURVEY HAS BEEN DONE SUITABLE FOR DA LODGEMENT PURPOSES.

BOUNDARIES HAVE NOT BEEN MARKED.

SURVEY INFORMATION NOTES

THE ORIGIN OF COORDINATES COMES FROM SSM167763 E294067.250 N623274.997 CLASS D (MGA2020) ADOPTED FROM SCHMS DATED 07/11/2023.

THE ORIGIN OF LEVELS COMES FROM GNSS AND IS BASED ON CORSNET DATA PROVIDED BY LRS NSW.

THE ORIENTATION OF THIS PLAN IS MGA NORTH WHICH HAS BEEN DETERMINED BY A COORDINATE JOIN BETWEEN SSM167763 AND SSM168904.

CERTIFICATE OF TITLE NOTES

THE FOLLOWING INFORMATION RELATES TO THE RESPECTIVE CERTIFICATE OF TITLE OF EACH LOT:

- LOT 2 IN DP1262720
(CT EDITION 6 DATED 15/07/2022 SEARCH DATE 26/10/2023)

- AFFECTED BY:

- RESTRICTION ON THE USE OF LAND (DP1154772)
- POSITIVE COVENANT REFERRED TO AND NUMBERED (7) IN THE 888 INSTRUMENT (DP1203105)
- POSITIVE COVENANT REFERRED TO AND NUMBERED (8) IN THE 888 INSTRUMENT (DP1203105)
- POSITIVE COVENANT (DP1203107)
- RESTRICTION ON THE USE OF LAND (DP1203107)
- RIGHT OF CARRIAGEWAY 7.6 METRE(S) WIDE AND VARIABLE WIDTH (DP1262720)
- EASEMENT FOR SERVICES 9.6 METRE(S) WIDE AND VARIABLE WIDTH (DP1262720)
- RIGHT OF CARRIAGEWAY 3.5 METRE(S) WIDE (DP1262720)
- POSITIVE COVENANT REFERRED TO AND NUMBERED (9) IN THE 888 INSTRUMENT (DP1262720)
- POSITIVE COVENANT REFERRED TO AND NUMBERED (10) IN THE 888 INSTRUMENT (DP1262720)
- RESTRICTION(S) ON THE USE OF LAND REFERRED TO AND NUMBERED (19) IN THE 888 INSTRUMENT (DP1262720)
- RESTRICTION(S) ON THE USE OF LAND REFERRED TO AND NUMBERED (20) IN THE 888 INSTRUMENT (DP1262720)
- RESTRICTION(S) ON THE USE OF LAND REFERRED TO AND NUMBERED (21) IN THE 888 INSTRUMENT (DP1262720)
- RESTRICTION(S) ON THE USE OF LAND REFERRED TO AND NUMBERED (22) IN THE 888 INSTRUMENT (DP1262720)
- RESTRICTION(S) ON THE USE OF LAND REFERRED TO AND NUMBERED (23) IN THE 888 INSTRUMENT (DP1262720)

- BENEFITED BY:

- EASEMENT FOR BATTER 10 METRE(S) WIDE AND VARIABLE WIDTH (DP1189248)
- EASEMENT TO DRAIN WATER AND OVERLAND FLOW 10 METRE(S) WIDE AND VARIABLE WIDTH (DP1183248)
- EASEMENT TO DRAIN WATER AND OVERLAND FLOW PATH 20 METRE(S) WIDE (DP1240841)
- RIGHT OF ACCESS 1.5 METRE(S) WIDE (DP1262720)
- EASEMENT FOR SUPPORT AND STRUCTURES 1.5 METRE(S) WIDE (DP1262720)
- RIGHT OF CARRIAGEWAY 7.6 METRE(S) WIDE AND VARIABLE WIDTH (DP1262720)
- EASEMENT FOR SERVICES 9.6 METRE(S) WIDE AND VARIABLE WIDTH (DP1262720)
- EASEMENT FOR SERVICES 13.62 METRE(S) WIDE (DP1262720)
- RIGHT OF CARRIAGEWAY 3.5 METRE(S) WIDE (DP1262720)
- EASEMENT TO DRAIN WATER 3.5 METRE(S) WIDE (DP1262720)
- EASEMENT TO DRAIN WATER VARIABLE WIDTH (DP1262720)
- EASEMENT FOR SUPPORT 0.5 METRE(S) WIDE (DP1272530)

COVENANTS AND RESTRICTIONS NOTED ON THE TITLE HAVE NOT BEEN INVESTIGATED. THESE SHOULD BE INVESTIGATED PRIOR TO DESIGN TO ENSURE ANY FUTURE DEVELOPMENT COMPLIES.

SERVICES NOTES

ONLY THOSE SERVICES VISIBLE AT THE TIME OF SURVEY HAVE BEEN LOCATED AND ARE QUALITY LEVEL A AS DEFINED BY AS 5488.1:2019.

UNDERGROUND SERVICES HAVE BEEN PLOTTED FROM 'DIAL-BEFORE-YOU-DIG' PLANS, ARE QUALITY LEVEL D AS DEFINED BY AS 5488.1:2019 AND ARE ONLY CURRENT AT THE DATE OF SEARCH.

ALL RELEVANT AUTHORITIES MUST BE CONTACTED TO DETERMINE THE FULL EXTENT OF SERVICES PRIOR TO ANY PLANNING OR WORKS NEAR THE SITE.

© COPYRIGHT

THIS PLAN IS NOT TO BE USED FOR ANY PURPOSE OTHER THAN ITS ORIGINAL INTENTION AND REMAINS THE PROPERTY OF SDG. THIS PLAN CANNOT BE REPRODUCED, COPIED OR DIGITALLY TRANSFERRED (IN WHOLE OR PART) WITHOUT PRIOR WRITTEN PERMISSION OF SDG.

PROJECT:
DETAIL AND LEVEL SURVEY OF
LOT 2 IN DP1262720

9 GREGORY HILLS DRIVE
GLEDSWOOD HILLS

CLIENT: SCHOOL INFRASTRUCTURE NSW
FILE: 9065 - Detail & Level - Rev A -
9 Gregory Hills Drive Gledswood Hills
LGA: CAMDEN
REF: 9065
ISSUE: A
SURVEY DATE: 10/11/2023
SCALE: 1:250

CONTOURS: 0.5m
DATUM: AHD
AZIMUTH: MGA2020
SHEET 7 OF 9 SHEETS

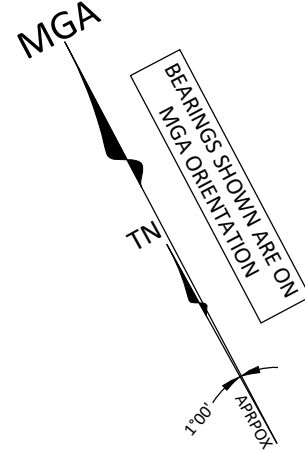


SDG Pty Ltd
abn 85 213 523 621
Suite 1, 3 Railway Street, Baulkham Hills NSW 2153
t: (02) 9630 7955 w: sdg.net.au
Liability limited by a scheme approved under Professional Standards Legislation

ISSUE	DATE	AMENDMENT	SURV	CHK
A	10/11/23	ORIGINAL ISSUE	PQ	JB



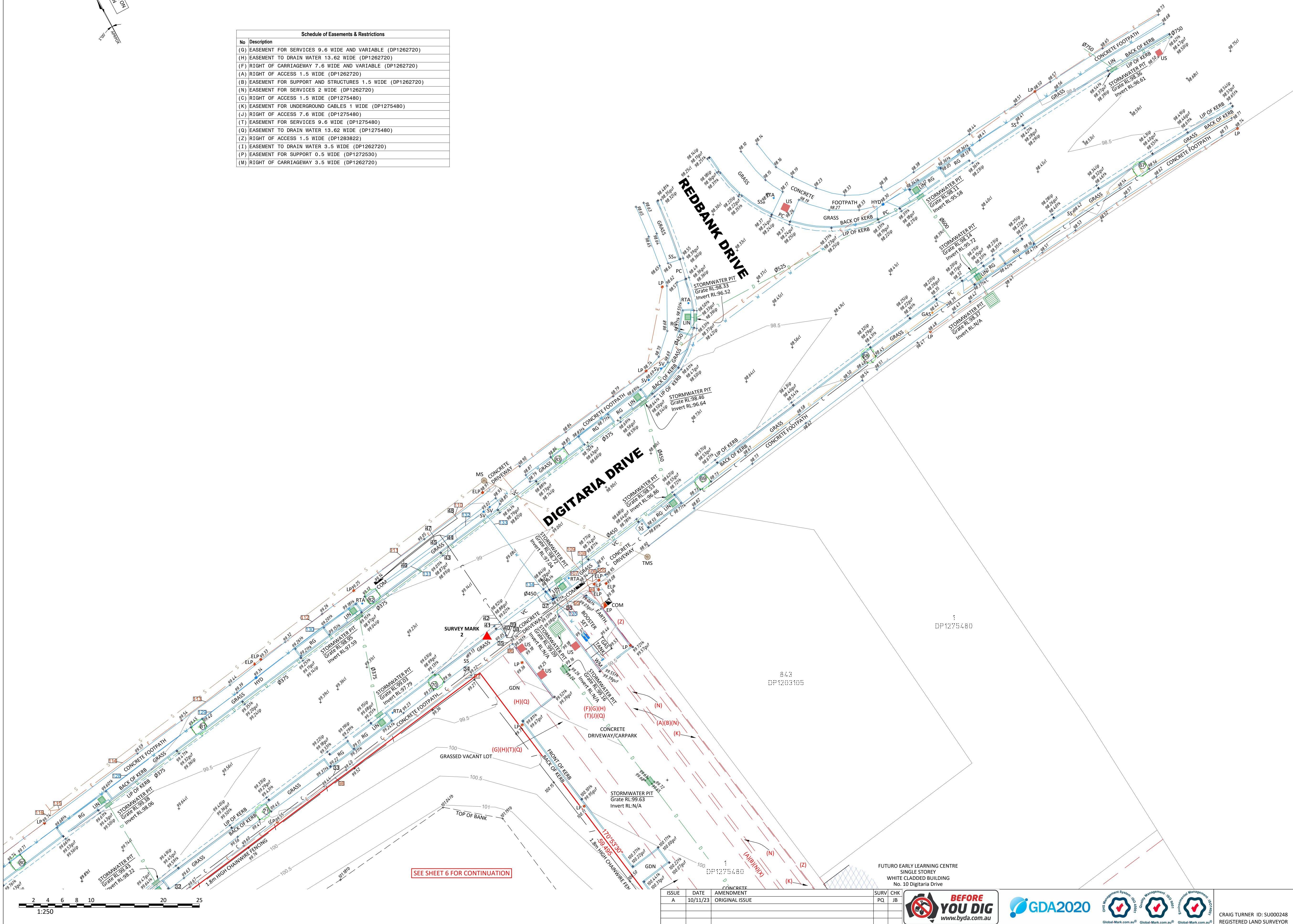
CRAIG TURNER ID: SU000248
REGISTERED LAND SURVEYOR



SEE SHEET 1 FOR LEGEND, TREE TABLE, UNDERGROUND SERVICES LEGEND & SURVEY MARK SCHEDULE

SEE SHEET 9 FOR UNDERGROUND SERVICES TABLE

Schedule of Easements & Restrictions	
No	Description
(G)	EASEMENT FOR SERVICES 9.6 WIDE AND VARIABLE (DP1262720)
(H)	EASEMENT TO DRAIN WATER 13.62 WIDE (DP1262720)
(F)	RIGHT OF CARRIAGEWAY 7.6 WIDE AND VARIABLE (DP1262720)
(A)	RIGHT OF ACCESS 1.5 WIDE (DP1262720)
(B)	EASEMENT FOR SUPPORT AND STRUCTURES 1.5 WIDE (DP1262720)
(N)	EASEMENT FOR SERVICES 2 WIDE (DP1262720)
(C)	RIGHT OF ACCESS 1.5 WIDE (DP1275480)
(K)	EASEMENT FOR UNDERGROUND CABLES 1 WIDE (DP1275480)
(J)	RIGHT OF ACCESS 7.6 WIDE (DP1275480)
(T)	EASEMENT FOR SERVICES 9.6 WIDE (DP1275480)
(Q)	EASEMENT TO DRAIN WATER 13.62 WIDE (DP1275480)
(Z)	RIGHT OF ACCESS 1.5 WIDE (DP1283822)
(I)	EASEMENT TO DRAIN WATER 3.5 WIDE (DP1262720)
(P)	EASEMENT FOR SUPPORT 0.5 WIDE (DP1272530)
(M)	RIGHT OF CARRIAGEWAY 3.5 WIDE (DP1262720)



GENERAL NOTES

ONLY TREES GREATER THAN 3 METRES IN HEIGHT ARE SHOWN ON THIS PLAN AND THEIR POSITIONS ARE DIAGRAMMATIC ONLY AND MAY REQUIRE ADDITIONAL SURVEY WHERE CRITICAL TO DESIGN.

CONTOURS ARE INDICATIVE AT GROUND FORM ONLY. SPOT LEVELS ONLY SHOULD BE USED FOR CALCULATIONS OF QUANTITIES WITH CAUTION.

LEVELS ARE ON AUSTRALIAN HEIGHT DATUM (AHD).

ALL SETOUT LEVELS MUST BE REFERRED TO THE BENCH MARK SHOWN ON THIS PLAN.

BOUNDARY NOTES

A BASIC BOUNDARY SURVEY HAS BEEN DONE SUITABLE FOR DA LODGEMENT PURPOSES.

BOUNDARIES HAVE NOT BEEN MARKED.

SURVEY INFORMATION NOTES

THE ORIGIN OF COORDINATES COMES FROM SSM167763 E294067.250 N623274.997 CLASS D (MGA2020) ADOPTED FROM SCIMS DATED 07/11/2023.

THE ORIGIN OF LEVELS COMES FROM GNSS AND IS BASED ON CORSNET DATA PROVIDED BY LRS NSW.

THE ORIENTATION OF THIS PLAN IS MGA NORTH WHICH HAS BEEN DETERMINED BY A COORDINATE JOIN BETWEEN SSM167763 AND SSM168904.

CERTIFICATE OF TITLE NOTES

THE FOLLOWING INFORMATION RELATES TO THE RESPECTIVE CERTIFICATE OF TITLE OF EACH LOTS:

- LOT 2 IN DP1262720
(CT EDITION 6 DATED 15/07/2022 SEARCH DATE 26/10/2023)
- AFFECTED BY:
- RESTRICTION ON THE USE OF LAND (DP1154772)
 - POSITIVE COVENANT REFERRED TO AND NUMBERED (7) IN THE 888 INSTRUMENT (DP1203105)
 - POSITIVE COVENANT REFERRED TO AND NUMBERED (8) IN THE 888 INSTRUMENT (DP1203105)
 - POSITIVE COVENANT (DP1203107)
 - RESTRICTION ON THE USE OF LAND (DP1203107)
 - RIGHT OF CARRIAGEWAY 7.6 METRE(S) WIDE AND VARIABLE WIDTH (DP1262720)
 - EASEMENT FOR SERVICES 9.6 METRE(S) WIDE AND VARIABLE WIDTH (DP1262720)
 - RIGHT OF CARRIAGEWAY 3.5 METRE(S) WIDE (DP1262720)
 - POSITIVE COVENANT REFERRED TO AND NUMBERED (9) IN THE 888 INSTRUMENT (DP1262720)
 - POSITIVE COVENANT REFERRED TO AND NUMBERED (10) IN THE 888 INSTRUMENT (DP1262720)
 - RESTRICTION(S) ON THE USE OF LAND REFERRED TO AND NUMBERED (19) IN THE 888 INSTRUMENT (DP1262720)
 - RESTRICTION(S) ON THE USE OF LAND REFERRED TO AND NUMBERED (20) IN THE 888 INSTRUMENT (DP1262720)
 - RESTRICTION(S) ON THE USE OF LAND REFERRED TO AND NUMBERED (21) IN THE 888 INSTRUMENT (DP1262720)
 - RESTRICTION(S) ON THE USE OF LAND REFERRED TO AND NUMBERED (22) IN THE 888 INSTRUMENT (DP1262720)
 - RESTRICTION(S) ON THE USE OF LAND REFERRED TO AND NUMBERED (23) IN THE 888 INSTRUMENT (DP1262720)
- BENEFITED BY:
- EASEMENT FOR BATTER 10 METRE(S) WIDE AND VARIABLE WIDTH (DP1189248)
 - EASEMENT TO DRAIN WATER AND OVERLAND FLOW 10 METRE(S) WIDE AND VARIABLE WIDTH (DP1183248)
 - EASEMENT TO DRAIN WATER AND OVERLAND FLOW PATH 20 METRE(S) WIDE (DP1240841)
 - RIGHT OF ACCESS 1.5 METRE(S) WIDE (DP1262720)
 - EASEMENT FOR SUPPORT AND STRUCTURES 1.5 METRE(S) WIDE (DP1262720)
 - RIGHT OF CARRIAGEWAY 7.6 METRE(S) WIDE AND VARIABLE WIDTH (DP1262720)
 - EASEMENT FOR SERVICES 9.6 METRE(S) WIDE AND VARIABLE WIDTH (DP1262720)
 - EASEMENT TO DRAIN WATER 13.62 METRE(S) WIDE (DP1262720)
 - RIGHT OF CARRIAGEWAY 3.5 METRE(S) WIDE (DP1262720)
 - EASEMENT TO DRAIN WATER 3.5 METRE(S) WIDE (DP1262720)
 - EASEMENT TO DRAIN WATER VARIABLE WIDTH (DP1262720)
 - EASEMENT FOR SUPPORT 0.5 METRE(S) WIDE (DP1272530)

COVENANTS AND RESTRICTIONS NOTED ON THE TITLE HAVE NOT BEEN INVESTIGATED. THESE SHOULD BE INVESTIGATED PRIOR TO DESIGN TO ENSURE ANY FUTURE DEVELOPMENT COMPLIES.

SERVICES NOTES

ONLY THOSE SERVICES VISIBLE AT THE TIME OF SURVEY HAVE BEEN LOCATED AND ARE QUALITY LEVEL A AS DEFINED BY AS 5488.1:2019.

UNDERGROUND SERVICES HAVE BEEN PLOTTED FROM 'DIAL-BEFORE-YOU-DIG' PLANS, ARE QUALITY LEVEL D AS DEFINED BY AS 5488.1:2019 AND ARE ONLY CURRENT AT THE DATE OF SEARCH.

ALL RELEVANT AUTHORITIES MUST BE CONTACTED TO DETERMINE THE FULL EXTENT OF SERVICES PRIOR TO ANY PLANNING OR WORKS NEAR THE SITE.

© COPYRIGHT

THIS PLAN IS NOT TO BE USED FOR ANY PURPOSE OTHER THAN ITS ORIGINAL INTENTION AND REMAINS THE PROPERTY OF SDG. THIS PLAN CANNOT BE REPRODUCED, COPIED OR DIGITALLY TRANSFERRED (IN WHOLE OR PART) WITHOUT PRIOR WRITTEN PERMISSION OF SDG.

PROJECT:

DETAIL AND LEVEL SURVEY OF
LOT 2 IN DP1262720

9 GREGORY HILLS DRIVE
GLEDSDOOD HILLS

CLIENT: SCHOOL INFRASTRUCTURE NSW

FILE: 9065 - Detail & Level - Rev A -

9 Gregory Hills Drive Gledswood Hills

LGA: CAMDEN

REF: 9065

ISSUE: A

SURVEY DATE: 10/11/2023

SCALE: 1:250

CONTOURS: 0.5m

DATUM: AHD

AZIMUTH: MGA2020

SHEET 8 OF 9 SHEETS

SDG

SDG Pty Ltd
abn 85 213 523 621
Suite 1, 3 Railway Street, Baulkham Hills NSW 2153
t: (02) 9630 7955 w: sdg.net.au
Liability limited by a scheme approved under Professional Standards Legislation

ISSUE	DATE	AMENDMENT	SURV	CHK
A	10/11/23	ORIGINAL ISSUE	PQ	JB



CRAIG TURNER ID: SU000248
REGISTERED LAND SURVEYOR

SERVICES-COMMUNICATIONS			
No	Surface RL	Approx Depth	Service RL
1	98.31	0.40	97.91
2	98.56	0.50	98.06
3	98.85	0.50	98.35
4	99.20	0.50	98.70
5	99.54	0.50	99.04
6	99.98	0.55	99.43
7	100.31	0.55	99.76
8	100.15	0.50	99.65
9	100.53		
10	100.86		
11	98.10	0.40	97.70
12	98.18	0.40	97.78
13	98.21	0.40	97.81
14	98.61	0.40	98.21
15	98.61	0.40	98.21
16	98.74	0.40	98.34
17	98.74	0.40	98.34
18	99.20	0.40	98.80
19	99.52	0.40	99.12
20	99.69	0.40	99.29
21	99.90	0.40	99.50
22	100.14	0.30	99.84
23	100.33	0.30	100.03
24	100.53	0.40	100.13
25	100.62	0.60	100.02
26	100.77	0.70	100.07
27	98.17	0.60	97.57
28	98.42	0.60	97.82
29	98.93	0.90	98.03
30	99.85	0.90	98.95
31	99.93	0.70	99.23
32	99.70	0.70	99.00
33	99.41	0.90	98.51
34	99.21	0.60	98.61
35	99.14	0.60	98.54
36	98.99	0.60	98.39
37	98.99	0.60	98.39
38	99.10		
39	99.10		
40	99.06	0.80	98.26
41	98.91		
42	98.98	0.60	98.38
43	99.02		
44	99.03		
45	99.02		
46	99.13	0.70	98.43
47	99.04		
48	99.03	0.60	98.43

SERVICES-ELECTRICITY			
No	Surface RL	Approx Depth	Service RL
49	100.26		
50	100.01	1.10	98.91
51	99.57	1.00	98.57
52	99.28	1.30	97.98
53	98.89	1.20	97.69
54	98.79		
55	98.61	1.00	97.61
56	98.36	1.00	97.36
57	98.08	1.00	97.08
58	100.82	1.20	99.62
59	100.84	0.90	99.94
60	100.80		
61	100.77	0.90	99.87
62	100.77	1.00	99.77
63	100.52	0.60	99.92
64	100.26		
65	100.26		
66	100.28		
67	100.12	0.85	99.27
68	100.43	1.00	99.43
69	100.52	1.00	99.52
70	100.76	0.95	99.81
71	100.28		
72	100.36	1.10	99.26
73	100.19	1.20	98.99
74	100.31	0.80	99.51
75	100.44	0.80	99.64
76	100.46		
77	100.47		
78	100.45	0.80	99.65
79	100.54	0.80	99.74
80	100.72		
81	100.83		
82	100.99	1.00	99.99
83	98.15	1.00	97.15
84	98.24	1.00	97.24
85	98.26	0.70	97.56
86	98.44	0.60	97.84
87	98.58	0.60	97.98
88	98.77		
89	98.70		
90	98.73	1.00	97.73
91	98.70	1.00	97.70
92	98.59		
93	98.70	1.20	97.50
94	98.97		
95	99.01	1.10	97.91
96	99.16	1.10	98.06
97	99.23	1.20	98.03
98	99.43	0.80	98.63
99	99.71	0.75	98.96
100	99.93	0.70	99.23
101	99.85	0.70	99.15
102	98.94	0.70	98.24
103	98.43	1.00	97.43
104	98.21	1.00	97.21
105	98.97		
106	98.96		
107	98.93		
108	98.89	1.10	97.79
109	98.83	1.10	97.73
110	99.02	0.80	98.22
111	99.11	0.60	98.51
112	99.31	0.80	98.51
113	99.45	0.80	98.65
114	99.60	0.90	98.70
115	99.66		
116	99.70		
117	99.80	0.80	99.00
118	99.85	0.70	99.15
119	99.43	1.10	98.33
120	99.05	1.00	98.05
121	98.21	1.00	97.21

SERVICES-POTABLE WATER			
No	Surface RL	Approx Depth	Service RL
122	98.01	0.60	97.41
123	98.18	0.60	97.58
124	99.00	0.60	98.40
125	99.44	1.00	98.44
126	99.82	0.50	99.32
127	99.86	0.60	99.26
128	99.55	0.50	99.05
129	99.40	0.50	98.90
130	99.26	0.60	98.66
131	99.05	0.60	98.45
132	98.98	0.60	98.38
133	98.88	0.80	98.08
134	98.88	0.80	98.08
135	99.01	0.80	98.21
136	101.17		
137	101.10	0.80	100.30
138	101.08		
140	98.22	0.85	97.37
141	98.52	0.80	97.72
142	98.78	1.00	97.78
143	99.17	0.95	98.22
144	99.53	1.00	98.53
145	99.96	1.00	98.96
146	100.29	1.20	99.09
147	100.53		
148	100.56		
149	100.78		
150	100.49		

SERVICES-RECYCLED WATER			
No	Surface RL	Approx Depth	Service RL
164	98.02	0.90	97.12
165	98.13	0.80	97.33
166	98.20	0.80	97.40
167	98.47	0.80	97.67
168	98.53	0.80	97.73
169	98.71	0.80	97.91
170	98.78	0.80	97.98
171	99.22	0.90	98.32
172	99.50	0.65	98.85
173	99.66	0.75	98.91
174	99.84	1.00	98.84
175	100.08	0.95	99.13
176	100.32	1.00	99.32
177	100.54	1.30	99.24
178	100.64	1.00	99.64
179	100.65		
180	100.72	1.00	99.72
181	100.82	1.00	99.82
182	100.82	1.00	99.82
183	100.93		

SERVICES-GAS			
No	Surface RL	Approx Depth	Service RL
151	100.03	0.50	99.53
152	100.37	0.50	99.87
153	100.19		
154	100.54		
155	100.79	0.45	100.34
156	100.79	0.45	100.34
157	100.73		
158	100.79		
159	100.79		
160	100.76		
161	100.70		
162	100.64		
163	100.78		

SERVICES-SEWER			
No	Surface RL	Approx Depth	Service RL
184	99.83		
185	99.85	4.96	94.89

GENERAL NOTES

ONLY TREES GREATER THAN 3 METRES IN HEIGHT ARE SHOWN ON THIS PLAN AND THEIR POSITIONS ARE DIAGRAMMATIC ONLY AND MAY REQUIRE ADDITIONAL SURVEY WHERE CRITICAL TO DESIGN.

CONTOURS ARE INDICATIVE AT GROUND FORM ONLY. SPOT LEVELS ONLY SHOULD BE USED FOR CALCULATIONS OF QUANTITIES WITH CAUTION.

LEVELS ARE ON AUSTRALIAN HEIGHT DATUM (AHD).

ALL SETOUT LEVELS MUST BE REFERRED TO THE BENCH MARK SHOWN ON THIS PLAN.

BOUNDARY NOTES

A BASIC BOUNDARY SURVEY HAS BEEN DONE SUITABLE FOR DA LODGEMENT PURPOSES.

BOUNDARIES HAVE NOT BEEN MARKED.

SURVEY INFORMATION NOTES

THE ORIGIN OF COORDINATES COMES FROM SSM167763 E294067.250 N623274.997 CLASS D (MGA2020) ADOPTED FROM SCIMS DATED 07/11/2023.

THE ORIGIN OF LEVELS COMES FROM GNSS AND IS BASED ON CORSNET DATA PROVIDED BY LRS NSW.

THE ORIENTATION OF THIS PLAN IS MGA NORTH WHICH HAS BEEN DETERMINED BY A COORDINATE JOIN BETWEEN SSM167763 AND SSM168904.

CERTIFICATE OF TITLE NOTES

THE FOLLOWING INFORMATION RELATES TO THE RESPECTIVE CERTIFICATE OF TITLE OF EACH LOT:

- LOT 2 IN DP1262720 (CT EDITION 6 DATED 15/07/2022 SEARCH DATE 26/10/2023)
- AFFECTED BY:
 - RESTRICTION ON THE USE OF LAND (DP1154772)
 - POSITIVE COVENANT REFERRED TO AND NUMBERED (7) IN THE 888 INSTRUMENT (DP1203105)
 - POSITIVE COVENANT REFERRED TO AND NUMBERED (8) IN THE 888 INSTRUMENT (DP1203105)
 - POSITIVE COVENANT (DP1203107)
 - RESTRICTION ON THE USE OF LAND (DP1203107)
 - RIGHT OF CARRIAGEWAY 7.6 METRE(S) WIDE AND VARIABLE WIDTH (DP1262720)
 - EASEMENT FOR SERVICES 9.6 METRE(S) WIDE AND VARIABLE WIDTH (DP1262720)
 - RIGHT OF CARRIAGEWAY 3.5 METRE(S) WIDE (DP1262720)
 - POSITIVE COVENANT REFERRED TO AND NUMBERED (9) IN THE 888 INSTRUMENT (DP1262720)
 - POSITIVE COVENANT REFERRED TO AND NUMBERED (10) IN THE 888 INSTRUMENT (DP1262720)
 - RESTRICTION(S) ON THE USE OF LAND REFERRED TO AND NUMBERED (19) IN THE 888 INSTRUMENT (DP1262720)
 - RESTRICTION(S) ON THE USE OF LAND REFERRED TO AND NUMBERED (20) IN THE 888 INSTRUMENT (DP1262720)
 - RESTRICTION(S) ON THE USE OF LAND REFERRED TO AND NUMBERED (21) IN THE 888 INSTRUMENT (DP1262720)
 - RESTRICTION(S) ON THE USE OF LAND REFERRED TO AND NUMBERED (22) IN THE 888 INSTRUMENT (DP1262720)
 - RESTRICTION(S) ON THE USE OF LAND REFERRED TO AND NUMBERED (23) IN THE 888 INSTRUMENT (DP1262720)
- BENEFITED BY:
 - EASEMENT FOR BATTER 10 METRE(S) WIDE AND VARIABLE WIDTH (DP1189248)
 - EASEMENT TO DRAIN WATER AND OVERLAND FLOW 10 METRE(S) WIDE AND VARIABLE WIDTH (DP1183248)
 - EASEMENT TO DRAIN WATER AND OVERLAND FLOW PATH 20 METRE(S) WIDE (DP1240841)
 - RIGHT OF ACCESS 1.5 METRE(S) WIDE (DP1262720)
 - EASEMENT FOR SUPPORT AND STRUCTURES 1.5 METRE(S) WIDE (DP1262720)
 - RIGHT OF CARRIAGEWAY 7.6 METRE(S) WIDE AND VARIABLE WIDTH (DP1262720)
 - EASEMENT FOR SERVICES 9.6 METRE(S) WIDE AND VARIABLE WIDTH (DP1262720)
 - EASEMENT FOR SERVICES 13.62 METRE(S) WIDE (DP1262720)
 - RIGHT OF CARRIAGEWAY 3.5 METRE(S) WIDE (DP1262720)
 - EASEMENT TO DRAIN WATER 3.5 METRE(S) WIDE (DP1262720)
 - EASEMENT TO DRAIN WATER VARIABLE WIDTH (DP1262720)
 - EASEMENT FOR SUPPORT 0.5 METRE(S) WIDE (DP1272530)

COVENANTS AND RESTRICTIONS NOTED ON THE TITLE HAVE NOT BEEN INVESTIGATED. THESE SHOULD BE INVESTIGATED PRIOR TO DESIGN TO ENSURE ANY FUTURE DEVELOPMENT COMPLIES.

SERVICES NOTES

ONLY THOSE SERVICES VISIBLE AT THE TIME OF SURVEY HAVE BEEN LOCATED AND ARE QUALITY LEVEL A AS DEFINED BY AS 5488.1:2019.

UNDERGROUND SERVICES HAVE BEEN PLOTTED FROM 'DIAL-BEFORE-YOU-DIG' PLANS, ARE QUALITY LEVEL D AS DEFINED BY AS 5488.1:2019 AND ARE ONLY CURRENT AT THE DATE OF SEARCH.

ALL RELEVANT AUTHORITIES MUST BE CONTACTED TO DETERMINE THE FULL EXTENT OF SERVICES PRIOR TO ANY PLANNING OR WORKS NEAR THE SITE.

© COPYRIGHT

THIS PLAN IS NOT TO BE USED FOR ANY PURPOSE OTHER THAN ITS ORIGINAL INTENTION AND REMAINS THE PROPERTY OF SDG. THIS PLAN CANNOT BE REPRODUCED, COPIED OR DIGITALLY TRANSFERRED (IN WHOLE OR PART) WITHOUT PRIOR WRITTEN PERMISSION OF SDG.

PROJECT:

DETAIL AND LEVEL SURVEY OF
LOT 2 IN DP1262720

9 GREGORY HILLS DRIVE
GLEDSDOOD HILLS

CLIENT: SCHOOL INFRASTRUCTURE NSW	
FILE: 9065 - Detail & Level - Rev A - 9 Gregory Hills Drive Gledswood Hills	
LGA: CAMDEN	
REF: 9065	CONTOURS: 0.5m
ISSUE: A	DATUM: AHD
SURVEY DATE: 10/11/2023	AZIMUTH: MGA2020
SCALE: N/A	SHEET 9 OF 9 SHEETS



SDG Pty Ltd
abn 85 213 523 621
Suite 1, 3 Railway Street, Baulkham Hills NSW 2153
t: (02) 9630 7955 w: sdg.net.au
Liability limited by a scheme approved
under Professional Standards Legislation

ISSUE	DATE	AMENDMENT	SURV	CHK
A	10/11/23	ORIGINAL ISSUE	PQ	JB



CRAIG TURNER ID: SU000248
REGISTERED LAND SURVEYOR